

# Wall Preparation

Remove the existing siding and make sure the wall is sound and not degraded due to wet or dry rot. If this is the case, reconstruct with new substrate materials before installing the new Novabrik siding. Have a qualified electrician extend the exterior outlets and light fixtures, and move the electric meter. Finally, have a qualified plumber extend the hose bib and remove downspouts if necessary.

- **Studs**

2" x 4" (38mm x 89mm) or  
2" x 6" (38mm x 140mm)

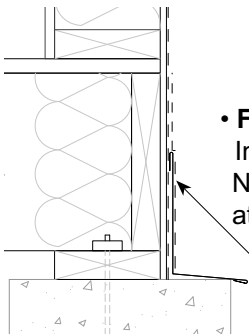
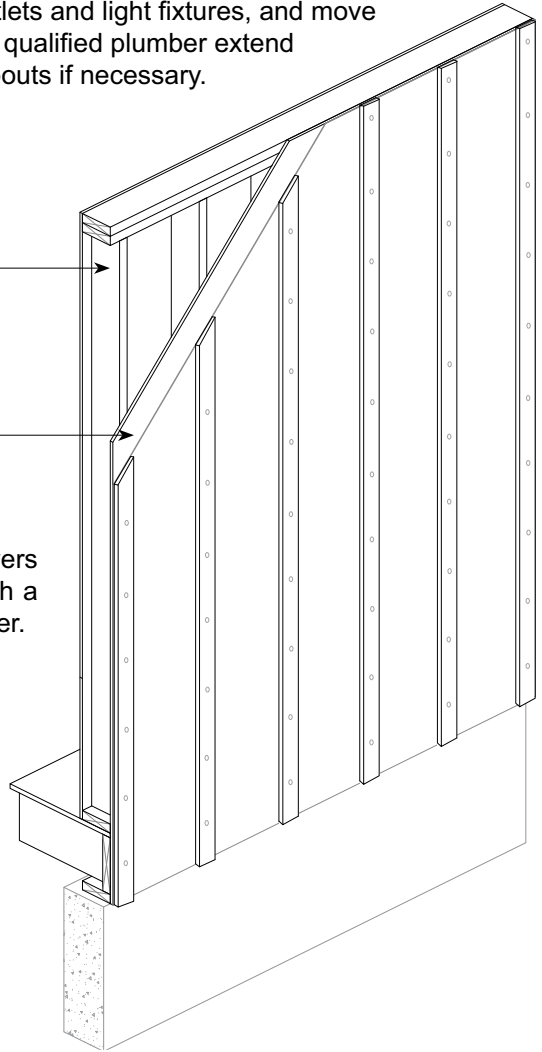
- **Sheathing**

(as specified by the Architect)

- **Housewrap**

Make sure the housewrap covers the sheathing. Seal all joints with a tape of an approved manufacturer.

Before you start installing the furring strips, indicate the stud location of your building on to the housewrap.



- **Flashing**

In cases where the foundation ledge exceeds the Novabrik veneer, it is required to install a flashing at the base of the wall.

Have the housewrap overlap the flashing by at least 6" (150mm)