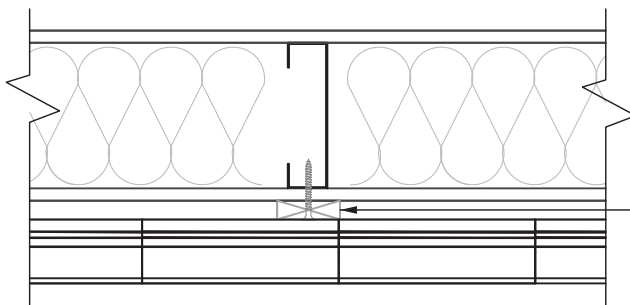
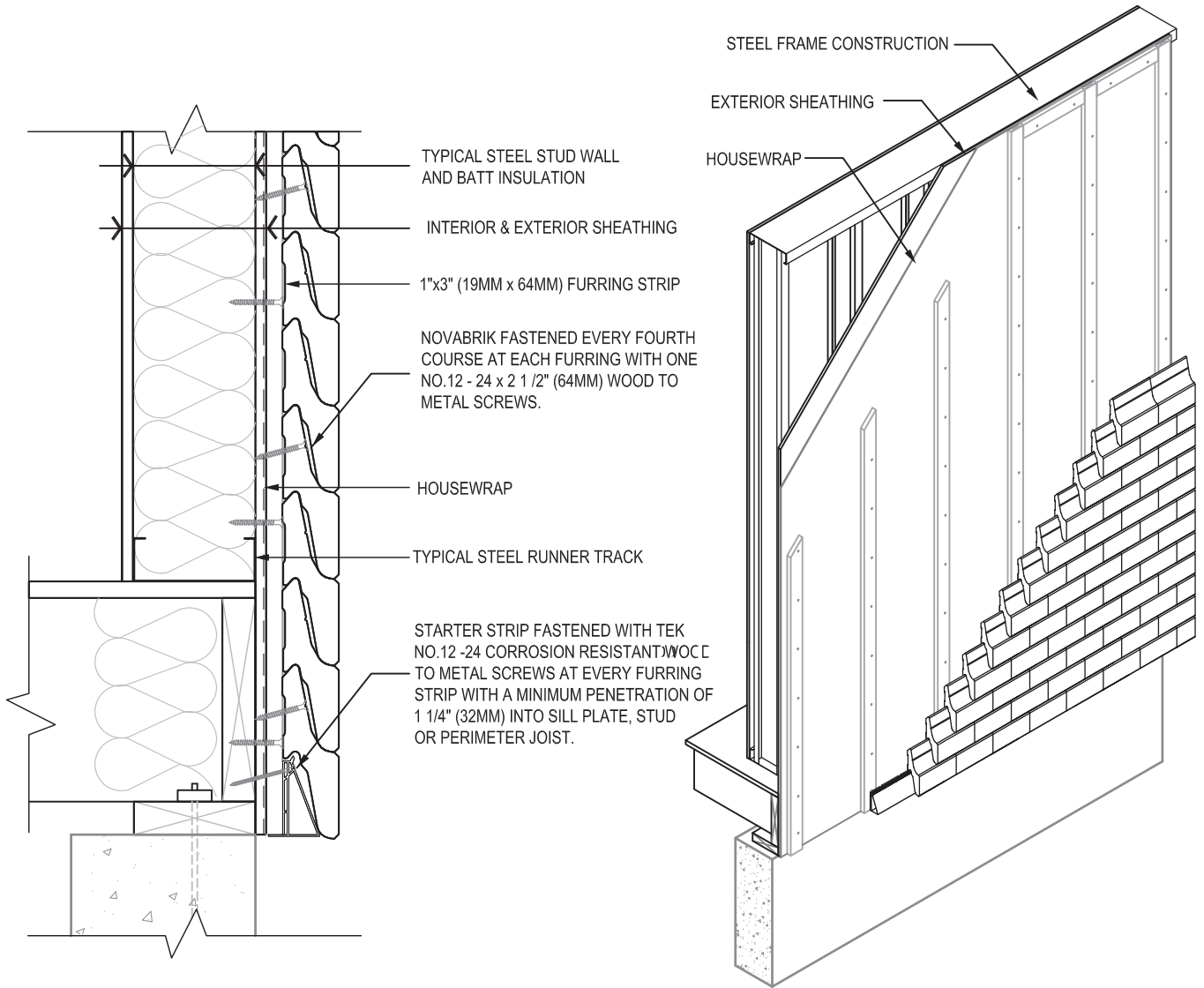


**4.4- INSTALLATION ON STEEL STRUCTURE**  
**1- TYPICAL STEEL STUD SECTION**



1" x 3" (19MM x 64MM) VERTICAL WOOD FURRING STRIPS FASTENED AT 10" (254MM) C/C WITH TEK NO.12 - 24 x 2 1/2" (64MM) CORROSION RESISTANT WOOD TO METAL SCREWS.