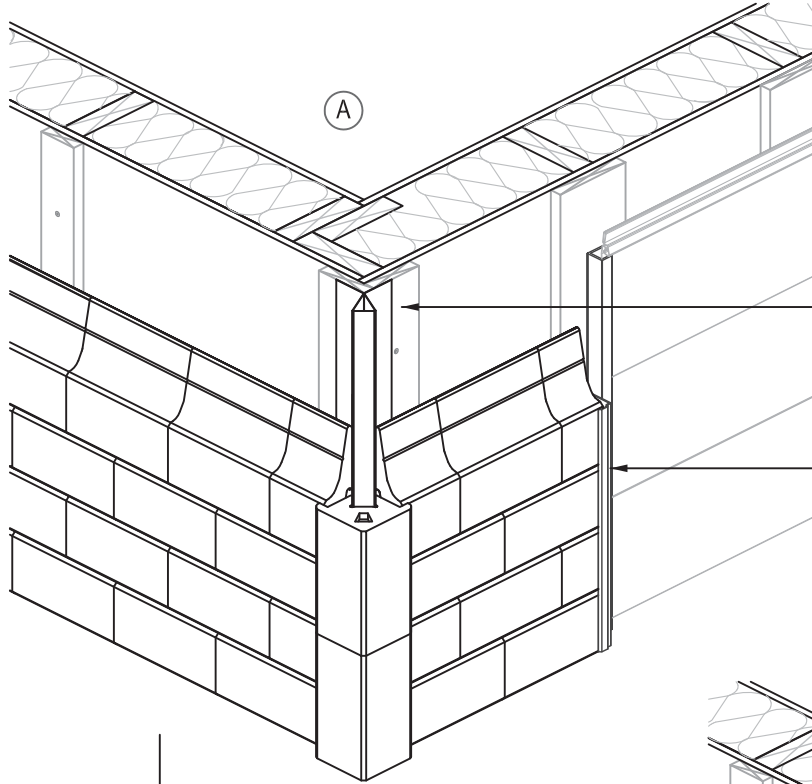
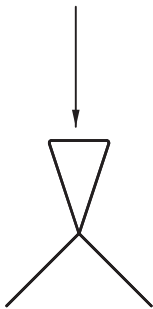


4.2- NOVABRIK INSTALLATION
2- 90° EXTERIOR CORNER BLOCK



WRAP NOVABRIK AROUND THE CORNER, INSTALLING THE CORNER BLOCK AS USUAL. SEE 90° EXTERIOR CORNER INSTALLATION SECTION.

INSTALL PVC WINDOW TRIM AND J CHANNEL OR MOLDING AGAINST THE BRICKS AND APPLY BEAD OF CAULK AT THE POINT.



1 - 1"x6" (19MM X 140MM) FURRING FASTENED TO THE STUDS.

3 - MODIFIED CORNER FASTEN TO 1"x6" (19MM X 140MM). USE A CORNER BLOCK AND POSITION THE CORNER STRIP TO ACHIEVE THE REQUIRED GAP FOR THE SIDING.

4 - INSTALL J CHANNEL OR MOLDING AGAINST THE INSIDE OF THE CORNER BLOCK AND APPLY A BEAD OF CAULKING AT THE JOINT.



2 - BEND AND TWIST THE CORNER STRIP.

