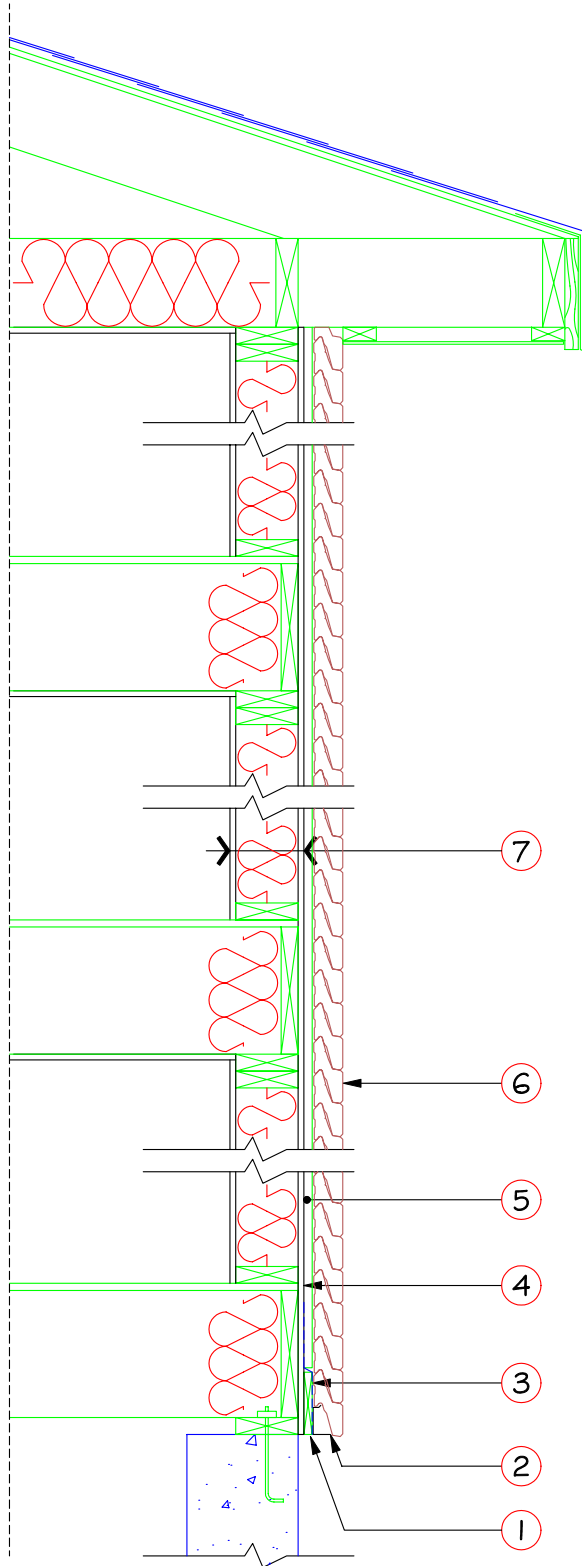


I - Wood frame structure



LEGEND

- 1- 1" x 6" pressure-treated baseboard fastened @ 8" o.c. with #8 corrosion-resistant wood screws (1 1/4" minimum penetration into stud)
- 2- Starter strip
- 3- Housewrap or flashing covering baseboard
- 4- Housewrap
- 5- 1" x 3" vertical wood furring strips fastened @ 10" o.c. with #8 corrosion-resistant wood screws (1 1/4" minimum penetration into stud)
- 6- Novabrik fastened every fourth course at each furring strip with one #8-2 1/2" corrosion-resistant wood screw
- 7- Standard wood frame construction